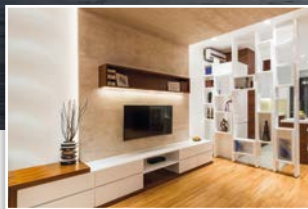
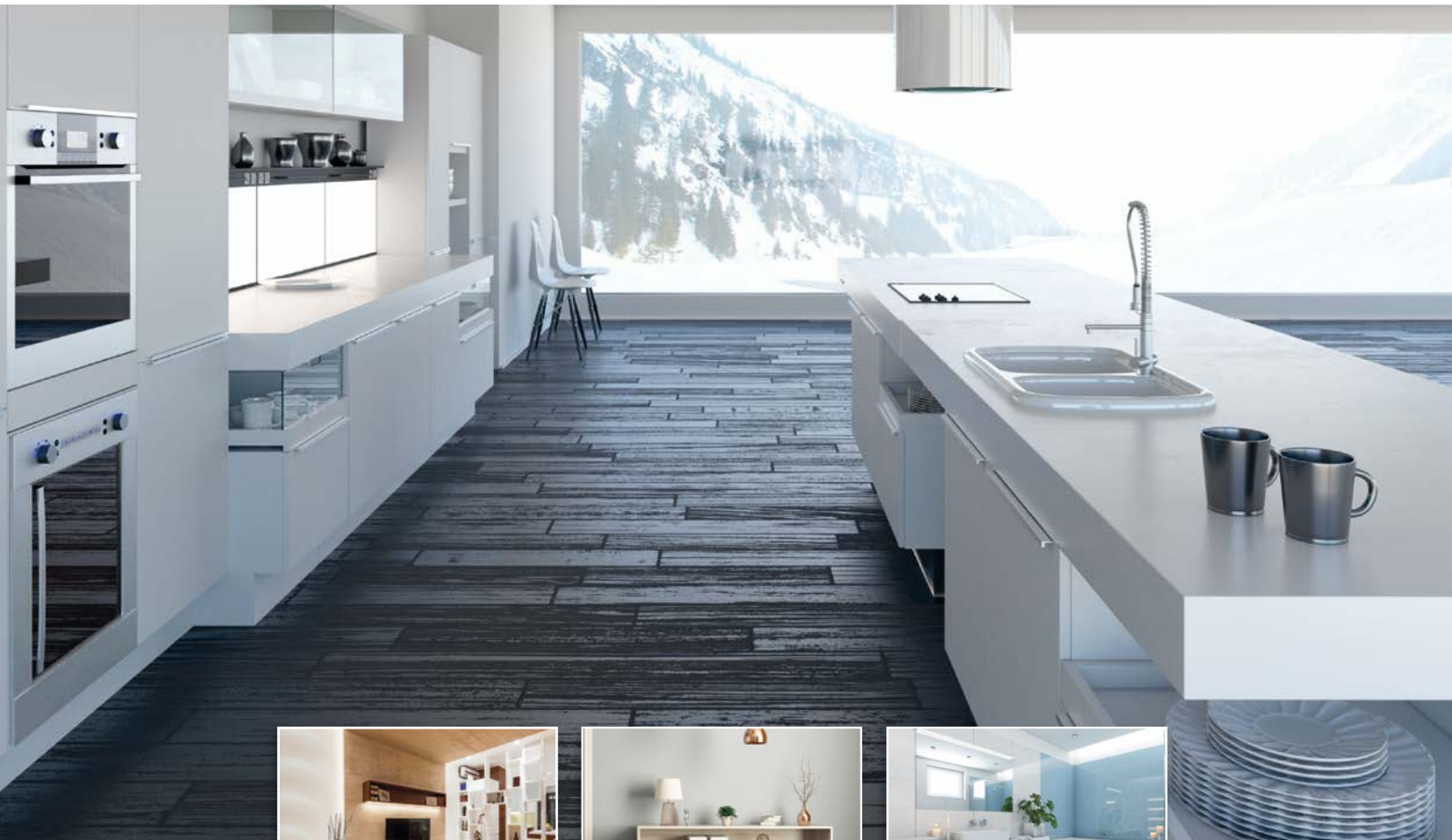


# PUR Hotmelt Adhesives for **Edge Banding**



Edging adhesives for prefab construction and furniture with highest quality standards



# Adhesives for the perfect edge

## Adhesive systems for kitchen and bathroom furniture as well as prefabricated components

Elaborately designed pieces of furniture for long-term use, e.g. in commercial construction, have particularly high quality requirements in terms of material and processing. The invisible glue line in between stands for highest bonding quality and an elegant appearance. A seamless transition between edge and surface is often a fundamental criterion for the design of high-quality furniture. In the furniture industry, edge banding is performed using state-of-the-art edgebanding machines. The requirements for an economical, efficient production process are constantly increasing. The adhesive must bond a wide variety of materials quickly and securely and allow immediate further processing of the furniture panels. PUR hotmelt adhesives with particularly high initial strengths are therefore ideal for edge banding.

Special attention must be paid to the joints of the edge bonding of furniture panels made of wood-based materials. They are considered to be particularly sensitive and must be made as invisible and tight as possible, both visually and physically. Especially in the kitchen or bathroom, furniture is frequently exposed to the influence of water, steam and heat. If these come in contact with an edge joint which hasn't been produced properly, it will swell over time. The piece of furniture is then slowly but surely destroyed.

The variety of materials, thicknesses, colors and embossing is high. Edge materials are usually made of plastic, metal or wood. Panels are known for:

- furniture fronts
- furniture side panels
- furniture back panels

The surfaces of these panels are usually already laminated before edging. Typical material combinations for edge bonding are e.g.


- MDF board with ABS edge
- chipboard with ABS edge
- sandwich panel with ABS edge
- sandwich panel with aluminum edge
- and many more.

In order to achieve the most elegant appearance possible, the invisible glue line has become widely accepted in the transition between edge and surface decor. It stands for the highest processing quality and offers the best protection against moisture penetration.



Reactive PUR hotmelts master the demanding task of edge bonding for kitchen and bathroom furniture with ease. In these adhesive systems, chemical post-curing occurs after physical curing. This results in very high temperature resistance (-30 °C to +150 °C) and

moisture resistance. They are clearly superior to conventional EVA or polyolefin-based edge adhesives. KLEIBERIT® PUR hotmelt adhesives are suitable for almost all edgebanding materials.

**ME** Micro-Emission PUR Hotmelts for Edge Banding

Product	Viscosity 140 °C [mPa·s]	Application temperature [°C]	Color	Application examples/Characteristics
707.9.50 707.9.51 707.9.58 707.9.95	80,000	140 - 160	ivory white translucent black	<b>THE label-free,</b> Can be used for all common edgeband materials, can remain in the melting tank overnight without cleaning (KLEIBERIT® Overnight Technology)
707.9.85 	80,000	120 - 160	ivory	<b>THE sustainable,</b> Micro-emission technology with > 35% non-petroleum raw materials

**PUR Hotmelts for Edge Banding**

Product	Viscosity 140 °C [mPa·s]	Application temperature [°C]	Color	Application examples/Characteristics
702.7.00	60,000	120 - 160	translucent	<b>THE hard elastic,</b> especially for sensitive materials such as edge bands painted on the reverse side
707.6.80 	60,000	120 - 140	ivory	<b>THE all-rounder,</b> with a balanced performance level. Version with > 5% non-petroleum raw materials
707.6.40	100,000	140 - 160	nature	<b>DER Overnight-Hotmelt,</b> can remain in the melting tank overnight without cleaning (KLEIBERIT® Overnight Technology). Also available as white and fluorescent variant (for simplified application control)
707.7.00	60,000	120 - 130	ivory	<b>THE cartridge hotmelt,</b> e.g. for HolzHer melting systems
707.9.00	80,000	120 - 160	ivory	<b>THE professional,</b> for industrial systems with higher line speeds. Also available as transparent, white, lightfast and fluorescent versions (for simplified application control)
707.9.80 	80,000	120 - 160	ivory	Version with > 5% non-petroleum raw materials. Also available as fluorescent version
707.9.40	35,000	120 - 140	translucent	<b>THE specialist,</b> for bonding where exceptionally high initial strength is required. Also available as a white version



J-shape



Edgebanding



Invisible glue line

## Cleaning products

Product	Application examples/Characteristics
761.6.00	Cleaning of tank and drum melters, gear pumps and transport hoses, metal application units (e.g. slot nozzle, roller). Combines the function of flushing cleaners like KLEIBERIT® 761.7 and the intensive cleaner KLEIBERIT® 826.0 in just one product
761.6.06	Higher viscosity version of KLEIBERIT® 761.6.00. Particularly well suited for cleaning of roller application units in edge banding machines.
761.7.00	Cleaning of tank and drum melters, gear pumps and transport hoses, metal application units (e.g. slot nozzle, roller)
761.9.00	Higher viscosity version of KLEIBERIT® 761.7.00. Cleaning of tank and drum melters, gear pumps and transport hoses, metal application units (e.g. slot nozzle, roller). In cartridge form particularly well suited for cartridge melting systems.
823.3	Cold cleaner for removal of hardened adhesive residue on machine parts, tools and devices
826.0	Hot cleaner for removing reacted or cracked adhesive residues from machine parts, tools and equipment



The capabilities of the edge banding machines available are a decisive factor. The production process and the intended use of the panel differ from case to case. For a perfect result, individual consultation is essential. Our edgebanding adhesives have been used by the furniture processing industry for several decades. Our engineers are very familiar with the edge banding machines commonly used in the market. Let us advise you! Together we will find the right adhesive and optimize your individual production process.

Contact us directly by email or telephone or visit our website:

**KLEIBERIT SE & Co. KG**  
 Max-Becker-Str. 4  
 76356 Weingarten/Germany  
 Phone: +49 7244 62-0  
 Fax: +49 7244 700-0  
 Email: [info@kleiberit.com](mailto:info@kleiberit.com)  
[www.kleiberit.com](http://www.kleiberit.com)

